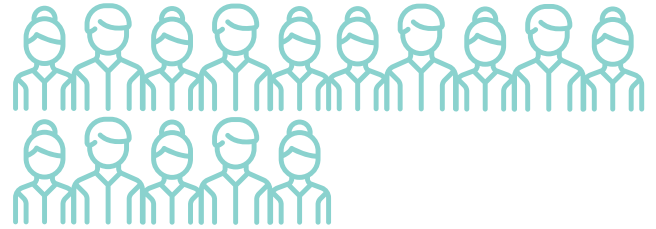


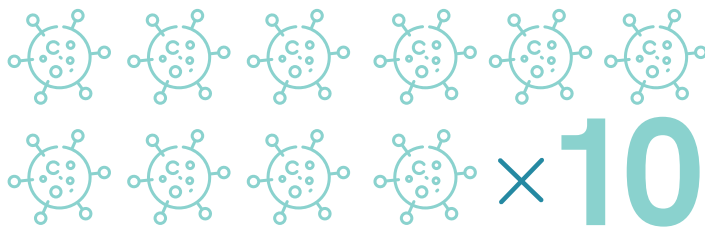
What is sarcoma?



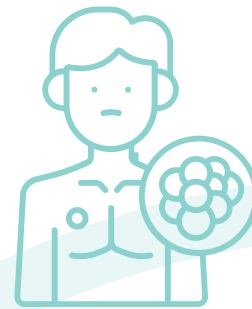
Sarcomas are uncommon cancers that can develop anywhere in the body, including the muscle, bone, tendons, blood vessels and fatty tissues.



15 people are diagnosed with sarcoma every day in the UK.






There are around 100 different subtypes of known sarcoma.



A key symptom of sarcoma is a lump that is increasing in size, often quickly.

Sarcoma UK is a national charity that funds vital research, offers support for anyone affected by sarcoma cancer and campaigns for better treatments.

 @Sarcoma_UK
 @Sarcoma_UK
 uk.sarcoma

sarcoma.org.uk



Sarcoma UK
The bone & soft tissue
cancer charity